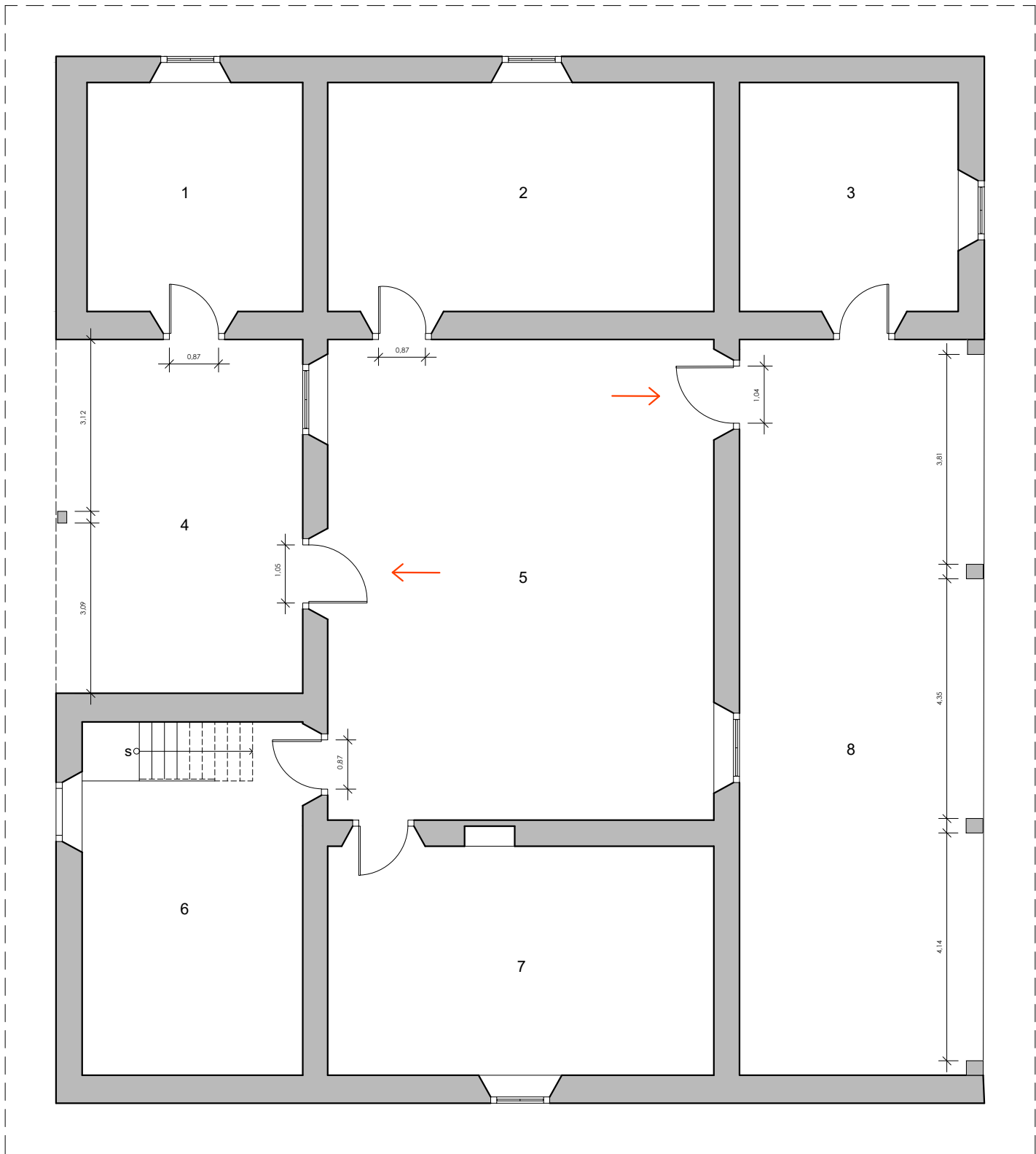


A



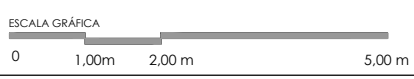
PROJ. TELHADO

A

- 1 - EDUCATIVO = 16,28m²
- 2 = 29,15m²
- 3 = 16,50m²
- 4 - ALPENDRE = 28,75m²
- 5 = 61,14m²
- 6 = 25,68m²
- 7 = 29,15m²
- 8 - ALPENDRE = 59,03m²

↑ ACESSO AS ÁREAS EXTERNAS

PAVIMENTO TÉRREO
ESCALA 1:100



FACILITY REPORT
CASA DO SERTANISTA

